



STUDIO & 3 BHK APARTMENTS

WELCOME TO
NITAL

*A place where dreams find their
first address.*

*At Nital, we believe a home is more
than just walls and windows, it's the
beginning of new stories,
milestones, and memories. Designed
with care and built with integrity,
Nital offers you a space where
comfort meets functionality, and
where every detail reflects
thoughtful living. Step into Nital,
and step into a future you'll be
proud to call your own.*



enter the new world
of opulence

Like the rarest of gems, Nital is crafted with a vision that goes beyond the ordinary. Every element, from its architecture to its ambiance. It is the perfect balance of rarity and refinement, where timeless elegance meets modern comfort, creating a home that is truly one of a kind, just like you.

your jewel in the city





unveiling the exclusivity

Like the rarest of gems, Nital is crafted with a vision that goes beyond the ordinary. Every element, from its architecture to its ambiance. It is the perfect balance of rarity and refinement, where timeless elegance meets modern comfort, creating a home that is truly one of a kind, just like you.



Elegant
Apartment



Exclusive
Amenities



Premium
Lifestyle

redefining skylines
with distinction.





15,000
sq. ft.

Clubhouse

75%

Open & Green

Ground
Floor

Open Area

Multi-Level

Amenities

Rooftop

Activity Centre

24x7

Security &
Surveillance

Amenities

That Enrich Life



Experience a thoughtfully designed community where leisure, wellness, and everyday conveniences come together.

Retail & Convenience



Retail Shops

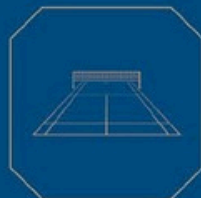
Convenient retail spaces of 500 sq. ft. within the community, ensuring daily essentials are always within reach.



Café

A lively alfresco café designed as a social hotspot for casual gatherings and relaxed evenings.

Sports & Recreation



Badminton Court

Double-height court for professional-level gameplay.



Multi-Sports Facility

Dedicated rooftop sports area for varied activities.



Swimming Pool

Open-to-sky pool offering a resort-like experience for leisure and fitness.



Gymnasium

Fully-equipped spaces for health, fitness, and wellness.

Family & Kids



Kids' Play Area

Safe, shaded play zones covering 1,500 sq. ft., encouraging creativity and fun.



Open Kids' Play Area

Outdoor landscapes designed for free-spirited activities in a secure environment.



Pet Park

Dedicated open spaces ensuring a pet-friendly and inclusive community.



Terrace Garden

Elevated green escapes to unwind, socialize, or enjoy panoramic skyline views.

Social & Community Spaces



Indoor Games

Engage in fun-filled indoor games designed for relaxation and bonding.



Wellness Center

A dedicated hub for holistic health and well-being, catering to all ages.



Yoga

Rejuvenate your body and mind with peaceful yoga sessions.



Aerobics

Stay energized and active with dynamic aerobics sessions crafted for fitness.



Ladies' Lounge

An exclusive space crafted for women to relax, socialize, and unwind in comfort.



Senior Wellness Hub

A thoughtful haven dedicated to the health, care, and well-being of seniors.



Multipurpose Hall

Versatile spaces for events, gatherings, and celebrations.

Parking & Safety



Ample Parking

Sufficient parking facilities for residents and visitors.



Secure Environment

All outdoor areas designed with safety in mind for children and families.

a foyer
beyond
expectations.

*Every arrival feels special in a foyer
crafted with luxury and elegance.*





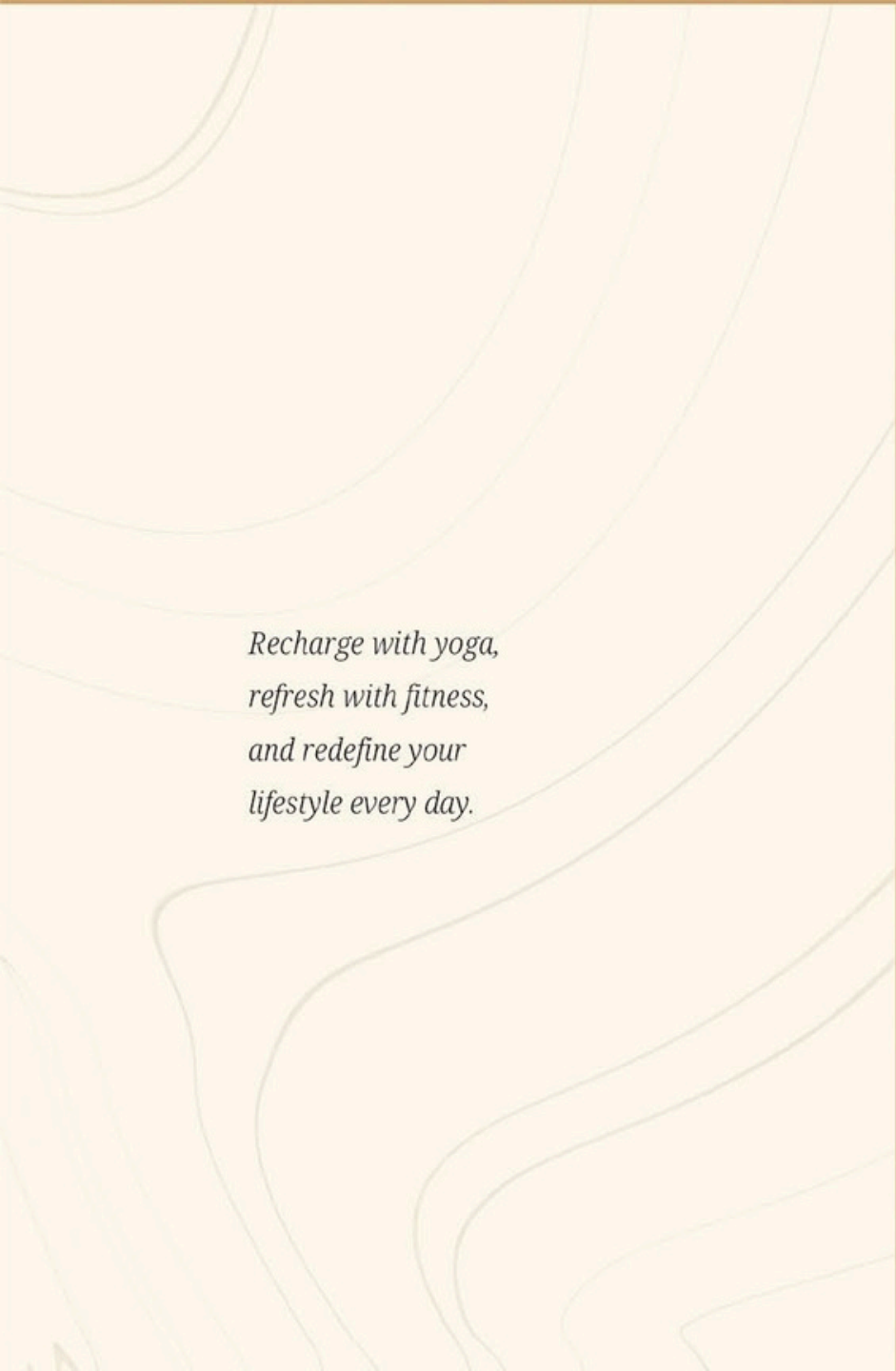
play,
celebrate,
belong

*Whether it's kids
discovering fun or
families coming
together for special
moments, our spaces
bring joy to all.*





your daily
dose of
wellness



*Recharge with yoga,
refresh with fitness,
and redefine your
lifestyle every day.*



Location



a location that elevates living

Rise above the ordinary with a well-connected address.

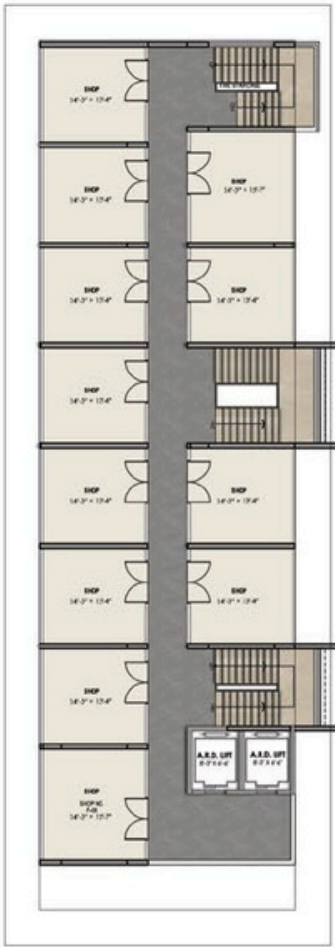
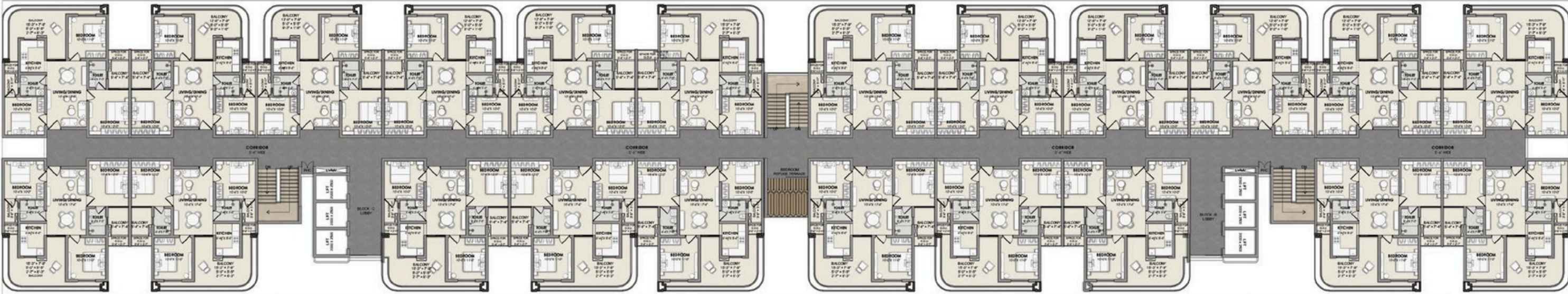
Near-by

Vatika Central Park	1 min
Jaipur Vatika Hospital	1 min
Jaipur Ajmer Expressway	2 min
Pink Pearl Water Resort	3 min
Manipal University	5 min
Arya Medical College	5 min
Ring Road	6 min
Dharav High School	6 min
D Mart	6 min
Decathlon	6 min
JK LakshmiPat University	7 min
Mahindra Sez	7 min
Jayshree Periwal International School	10 min
Narayan Vihar Bus Stand	10 min
Neerja Modi School	13 min
Railway Station	20 min
Jaipur International Airport	25 min

Map Not To Scale

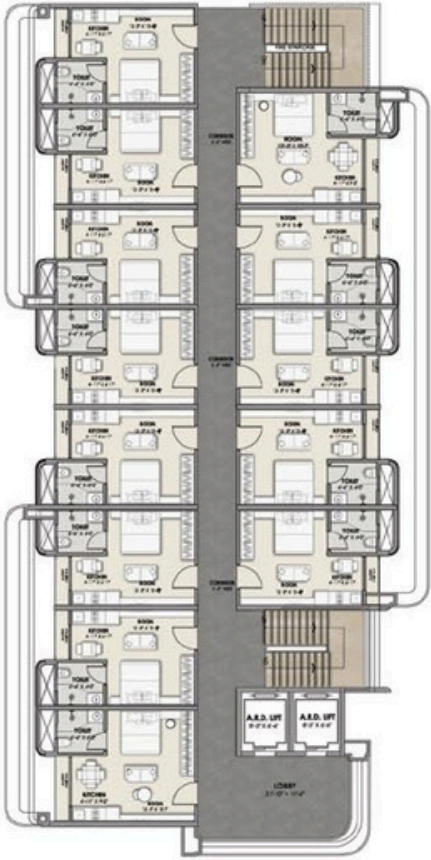
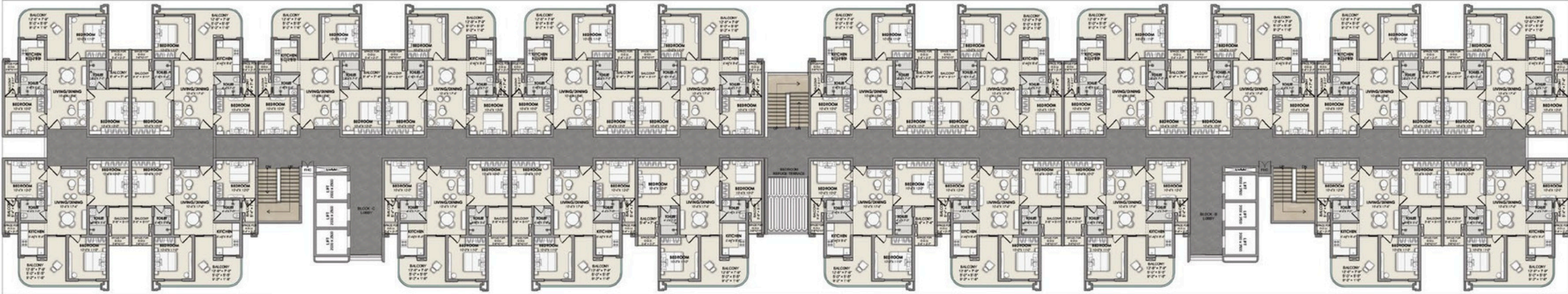
Typical Floor Plan

1st, 8th, 9th, 14th, 15th Floor



Typical Floor Plan

2nd - 7th, 10th - 13th, 16th - 18th Floor





Unit Type - EWS Type 1

Saleable Area - 512.87 SQFT



Unit Type - EWS Type 2

Saleable Area - 459.37 SQFT



Unit Type - LIG Type 1

Saleable Area - 1313.46 SQFT



Unit Type - LIG Type 2

Saleable Area - 1249.47 SQFT




Unit Type - LIG Type 3

Saleable Area - 1309.80 SQFT

Nital Site Address : Vatika Infotech City, Ajmer Road, Jaipur

Corporate Office : 40-43, 5th Floor, Sunny Mart, New Aatish Market, Mansarovar, Jaipur

 **8687882222**

info@aashishgroup.org



Rera Reg. No. RAJ/P/2025/4228

www.rera.rajasthan.gov.in

**** Disclaimer:** This brochure is merely a conceptual plan to convey intent and purpose of the project and is not a legal document. It cannot be treated as a part of the final purchase agreement/s, that may be executed from time to time. All layouts, plans, specifications, dimensions, designs, measurements and locations are indicative and are 'not to scale' and are subject to change as may be decided by the Promoter or competent authority. The permissible revision, alteration, modification, addition, deletion, substitution or recast, if any, may be necessary during construction. All dimensions are subject to construction variances. Interior designing and images used are only for representation purpose. Soft furnishing, furniture and gadgets are not part of the offering. ***Terms & Conditions Applicable.**